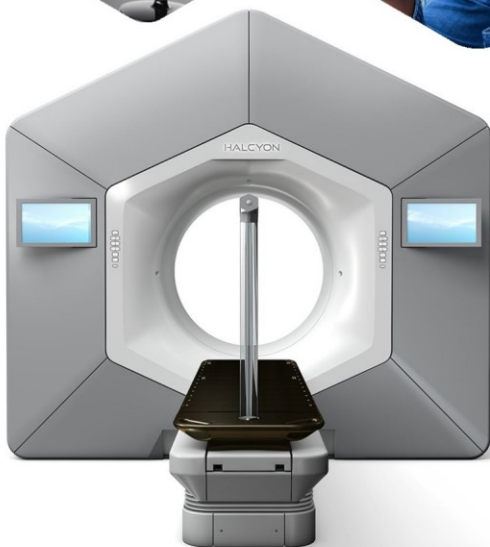
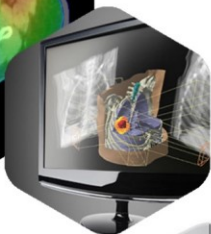
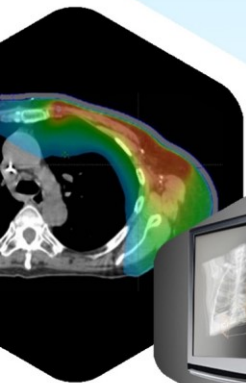


A PATIENT'S GUIDE  
TO EASTERN INDIA'S 1<sup>ST</sup>

# HALCYON™ RADIOTHERAPY SYSTEM



CANCER CENTRE

# HALCYON RADIOTHERAPY

## First things first

Once you've been told you have cancer, the next step is to decide how to eliminate it. One option may be radiotherapy, a treatment procedure that can be delivered by the Halcyon™ radiotherapy system.

This guide will give you a brief overview of how Halcyon works to treat cancer. You'll learn about its advantages, the types of treatments it can deliver, and what to expect during treatment.

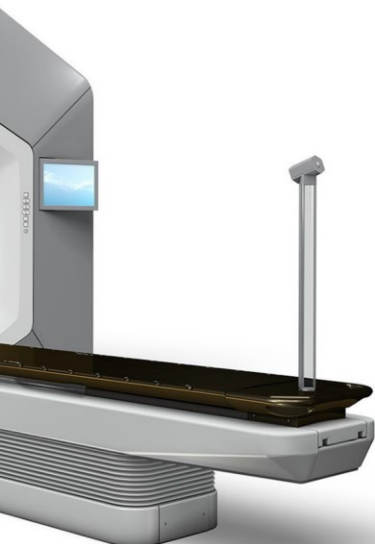


## How does it work?

Radiotherapy is an individualized treatment. The radiation beam from the treatment system is shaped to mirror the exact form of your specific tumor. That means the radiation is focused on the tumor while sparing the surrounding healthy tissues and organs.

The Halcyon system is the most recent advancement in Radiotherapy, now introduced in Eastern India by Apollo Cancer Centres.

Its leading-edge technology precisely targets the tumor while providing a treatment environment that's quieter and more comfortable than ever before.



# ADVANTAGES OF THE HALCYON SYSTEM

## Fast

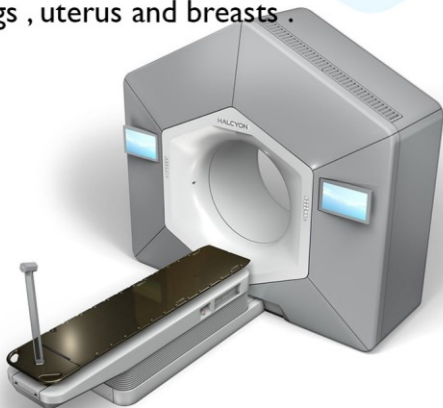
Halcyon is designed to provide treatment quickly and efficiently. Imaging can be completed in about 15 seconds, and treatments are typically completed in just nine steps. That means your time on the machine is greatly reduced. In fact, most treatments are completed in about 10 minutes. That's half of what's expected with conventional machines.

## Precise

Thanks to Halcyon's leading-edge, dual-layer multileaf collimator (MLC)—the device that shapes the beam—the tumor can be targeted with pinpoint precision. A paradigm shift in Cancer Treatment by Apollo Cancer Centres.

## Comprehensive

The Halcyon is comprehensive treatment technology for the brain , head and neck , prostate , lungs , uterus and breasts .



“ The time taken for treatment was faster, easier and comfortable **than what I imagined.**”

**Mr. Arun Mukherjee**

Prostate Cancer Patient

From Kolkata

## Comfortable

Since Halcyon uses a quiet, water-cooled system, the treatment room can be kept at a much more comfortable temperature. Advancements like a spacious opening, ambient lighting, and low treatment couch position work to keep you as comfortable during treatment as possible. Additionally, Halcyon's imaging and treatment components are enclosed, so you don't see anything rotating around you.

## Safety-conscious

Patient safety is of utmost importance. To create a closer connection between you and your therapist during treatment, Halcyon includes an integrated camera and intercom, so your therapist can closely monitor you and speak with you at all times. If you accidentally bump into the bore (the opening of the machine) during treatment, the collision detection system immediately pauses treatment and motion. In addition, Halcyon's treatment couch is positioned low, so you can get on and off more easily.

# TREATING CANCER WITH HALCYON, STEP BY STEP

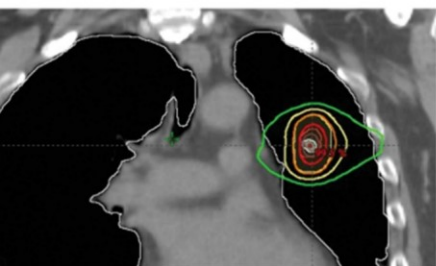
Although your treatment process may vary, the following should give you a general idea of what to expect.

## Tumor visualization

Imaging is important in order to visualize the tumor and accurately target it. Detailed 3-D images enable your doctor to know its exact size, shape, and location in your body. This information helps determine the appropriate dose of radiation and how to deliver it most effectively.

## Treatment planning

Using the 3-D images as their guide, your treatment team, including Doctors & Medical Physicists will develop a detailed plan that specifies the dose of radiation required to control the cancer cells and how can it be delivered from different angles. A schedule for treatment will also be developed during this phase.





## Treatment delivery

When it's time for treatment, your radiation therapist (RT) will help position you on the treatment table and make sure you're comfortable. Just prior to treatment, images will be taken to allow the RT to verify the tumor's exact size and location. Once the necessary adjustments are done by the therapist, your treatment will begin.

The radiation is delivered by a machine called a linear accelerator (linac), which rotates around you as it projects the beam. With Halcyon, the rotating beam gantry is enclosed within the opening (the bore) so you won't see anything rotating around you.

You will be in constant contact with your therapist through the integrated camera system and two-way intercom. Although the first treatment can take a bit longer due to additional setup, the entire process usually takes only a few minutes.







## Side effects

Common side effects are treatment site specific and can include mucositis (inflammation of oral cavity), swallowing difficulty, diarrhea, nausea, swelling at the treatment site, lymphedema, pneumonitis (inflammation of lung tissue), and secondary cancer. Talk to your doctor about what you can expect from your treatment and to find out if treatment with the Halcyon radiotherapy system is right for you.

## Follow-up Care

After your treatment, you should consult your doctor for follow-up care. During this time, doctor will monitor your progress. Take this opportunity to ask your doctor any questions about your treatments, the status of your health, and any side-effects you may be experiencing.



## Talk to your Radiation Oncologist at Apollo Cancer Centres

The information in this brochure is intended to serve as a general guide to Halcyon. It does not replace full discussion with your doctor and healthcare team. It is important to know that radiotherapy, including Halcyon radiotherapy, is not appropriate for all types and stages of cancer.

Actual treatment times may vary. Typical treatments are delivered once a day for a series of weeks.



Apollo Cancer Centres is the leader in cancer care in India , providing treatment solutions to cancer patients from over 110 countries, focused on winning over cancer.



Apollo Cancer Centres  
58, Canal Circular Road  
Kolkata - 700054

+91 9804000410